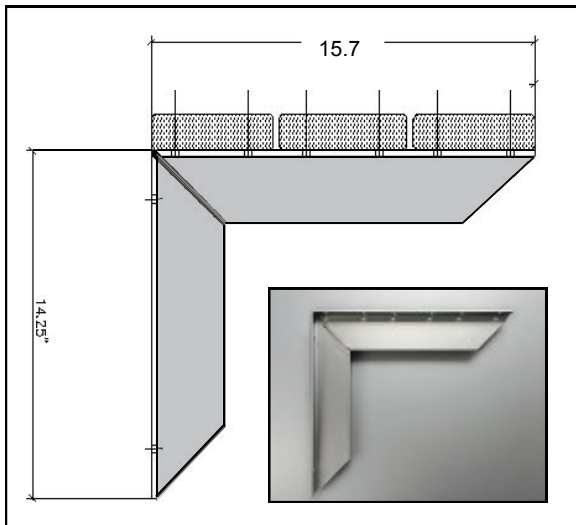


Made in the USA. Used for seating applications incorporating 5" wooden planking or solid tops. The supporting arm is pre-drilled with 12 holes to provide secure installation. Manufactured from 2" x 3" T to provide maximum stiffness. Surface mounted configuration brackets are screwed into studs or blocking of the finished wall. Using our rugged EHB (Inside the wall) configuration fabricated with 2"x3" T & 2"x2" L, the vertical leg is screwed to the side of the stud and hidden behind the drywall. Stocked in mill (unfinished) aluminum, off-white powder-coat, primed, black powder-coat and clear anodized aluminum.



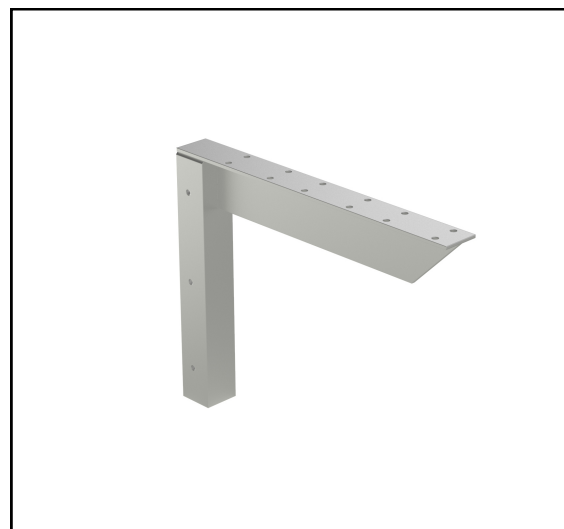
EH-1416B SURFACE MOUNT Bench Bracket



EH-1416B SURFACE MOUNT Bench Bracket

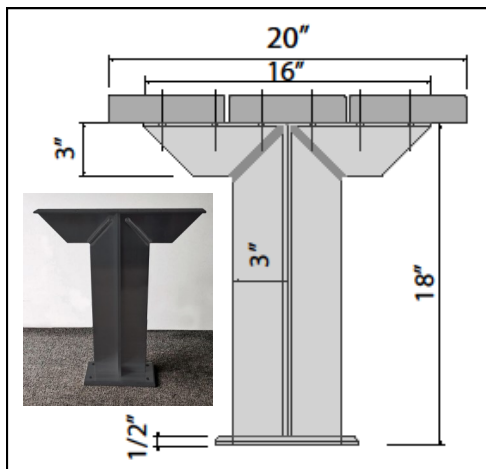


EHB INSIDE WALL Bench Bracket



EHB INSIDE WALL Bench Bracket

Made in the USA, Rakks Pedestal Bench Brackets provide exceptionally strong support for benches used in Locker rooms, Fitting rooms, and Dressing rooms. Offered in two configurations: Single Arm and Double Arm. Single Arm is used in close proximity to a supporting wall. Double Arm is easily used singularly or in a continued row. Available in 24" and 18" height, with a 20" maximum seat depth, and 4" x 8" base. When properly installed Pedestal Bench Brackets can support loads up to 400 pounds, using wooden planking or solid top. Manufactured from 2" x 3" T aluminum, Pedestal Brackets are rust-proof and are made to provide maximum stiffness. At the base, brackets are drilled at 1/2" diameter for easy installation. Available in Clear Anodized aluminum. Black powdercoat and White powdercoat are made to order.



Double Arm Floor Mount Bench Bracket



Double Arm Floor Mount used in a single bench configuration

INSTALLATION: There are two basic steps to assembly and installation:

Rakks Bench Bracket is Assembled to the Bench:

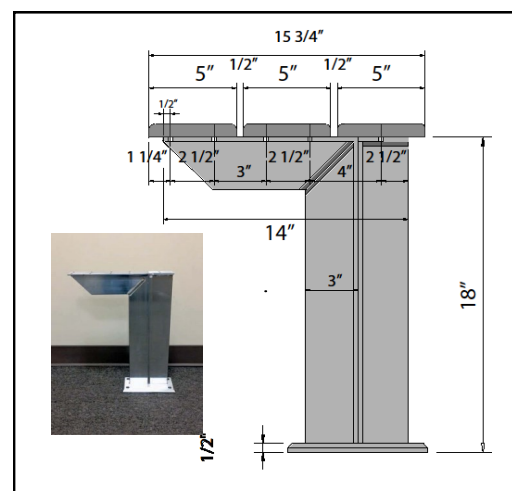
Place Bench top on a counter or solid surface. Adjust the position of the bench pedestal so that it is centered front to back. When used as a single independent bench, each bracket should be installed 6" from the left and right ends of the bench top. Mark holes and drill 3/16" pilot hole and tighten securely. When used in a continued run, Bench Tops can be joined together on a single Pedestal Bench Bracket. The first and last bracket should allow a 6" overhang, as above.

The Assembled Bench is then bolted to the floor:

Pedestals Bench Brackets should be no greater than 36" apart.

For typical concrete and wood installation Rakks recommends using the 3/8" diameter x 2" stainless steel hexagonal lag bolts included.

Note: Failure to bolt the bench assembly to the floor could result in injury.



Single Arm Floor Mount Bench Bracket