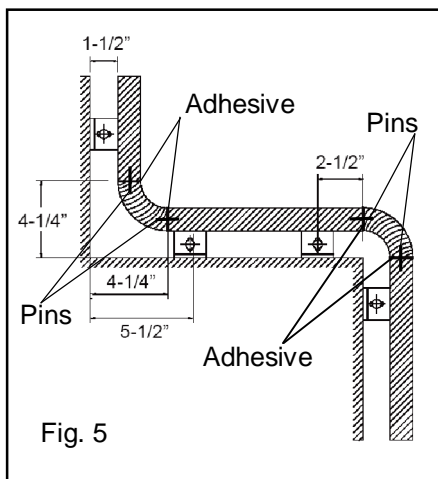
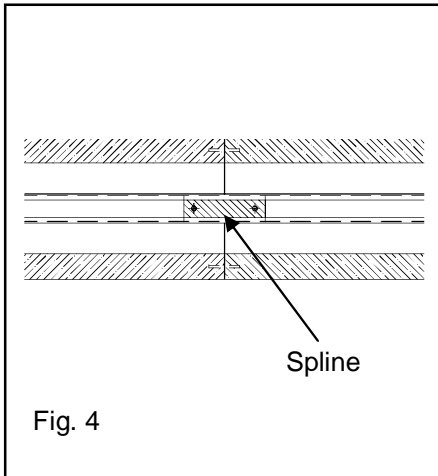


### Railing System Components consist of:

(Figure 1) Railing Body, Wall Mounting Bracket, Railing Mounting Bracket, Corners (used for inside and outside corners ) and End Caps

1. Determine the specified height above the finished floor to verify the top of the handrail. (Normally the height is 36 inches above the finished floor.)
2. Draw a level line on the wall (preferably with a Laser level) 2-1/2+below the height of the handrail.
3. Starting with a point 5-1/2+from the end of the wall mark off spots on the wall 32+apart from each other. Using an awl, prick these points (in order to avoid walking of the drill) and drill a 3/16+diameter drill a hole about 2+deep. We assume there is either blocking in the wall or studs can be located.
4. Fasten the top hole of the wall bracket to the wall at these locations using the 2-1/2+screws provided. Do not tighten completely. Remember, each section, no matter how short, must have at least a two bracket connection.
5. Place a straight piece of 2+x 4+(or a long piece of the handrail) to span all the brackets (Fig.2). This is to insure that the brackets are all on the same line and that they are all straight up and down. Drill the bottom hole and fasten the bracket tightly with both screws.
6. On a straight run, the correct length of the handrail is 6 inches shorter than the desired span of the railing. That is to allow 3 inches at each end of the handrail for the return of the end cap. It is also recommended that a 2+ space be left beyond the end cap.
7. Attach the handrail bracket to the wall bracket using the carriage bolt and the locknut provided. Hold down the bolt and tighten the nut with a ratchet wrench leaving them somewhat loose.
8. Press the 1/8+diameter pin of the end cap in to the holes of the handrail at both ends of the handrail with a dab of panel adhesive (Fig 3).
9. Hook the handrail over the brackets that are already on the wall. Slide the handrail over such that the free end of the end cap is about a recommended 2+from the end of the run. Use a dab of panel adhesive between the end cap and the wall. If the handrail is too long then it needs to be cut. Tighten the carriage bolt completely.



10. Use the 1/4-20 hex head and lock-washer to fasten the handrail bracket to the handrail (Fig. 1). We recommend a ratcheted box wrench to do the final tightening. **DO NOT OVERTIGHTEN.**

11. FOR LONG RUNS of the handrail it is necessary to splice pieces together. Cut the handrail to your proper length and connect the two pieces together by inserting the spline provided as shown (Fig.4) and fasten the inset screws.

12. TO CUT THE HANDRAIL. Use a triple chip blade in conjunction with cutting lubricant and a radial arm saw.

13. TO INSTALL A CORNER, press the pins of the corner piece into the Railing Body so that the corner is tight to the railing. Place a dab of adhesive between the corner and the handrail. Then install the next section of railing by sliding the railing over the pins so that the corner is captured between the two sections of railing. Add an additional dab of adhesive between corner and the second piece of railing. Note: Wall mounting and Rail Mounting Brackets must be on both sides of the corner so that the corner is held firmly in place. See (Fig.5)