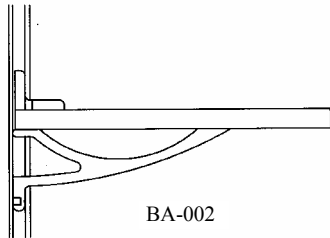
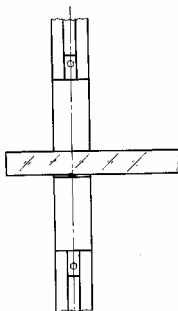


BA-001



BA-002



The Aria Bracket is a two-piece shelf support system that works with all Rakks wall mounted standards and most support poles. Featuring a graceful and dramatic appearance, Aria brackets are particularly well suited for glass shelving.

Aria brackets can support shelves of varying thickness between 5" and 12" deep. Maximum loading is 50# per bracket evenly distributed front-to-back.

Aria Brackets can be ordered in two configurations BA-001 and BA-002. They are available in clear and black anodized finishes and included color matched set screws.

Step by Step Installation

1. Each bracket consists of a top and bottom part. The bottom part comes with two clear plastic shelf rests that cushion the shelves and keep them from sliding. The top part does not have the shelf rests.

Insert the bottom and top parts of the Aria brackets into the standard or pole and secure the bottom brackets to the desired height by tightening the set screws. Let the top bracket rest on the bottom.

Note: Aria brackets are installed into the top or bottom ends of the standards or poles, or into Aria type access slots. If access slots have not been provided, install brackets into the standards before mounting them to the wall.

2. Make sure that the bottom brackets are level, adjusting them as needed. Tighten set screw "by hand" to secure bracket. **Do not overtighten .**

3. Slide the top brackets up and locate the shelf between the top and bottom brackets. While holding the shelf so that it lies flat on the bottom brackets slide the top bracket firmly onto the shelf. Secure with set screws. Make sure all set screws are secure and that the shelf is clamped firmly in place.

Engineered and manufactured in the United States by:
Rangine Corporation, Needham, Massachusetts 02494
Tel: 781-455-8700, 800-826-6006 Fax: 781-455-8702
www.rakks.com