

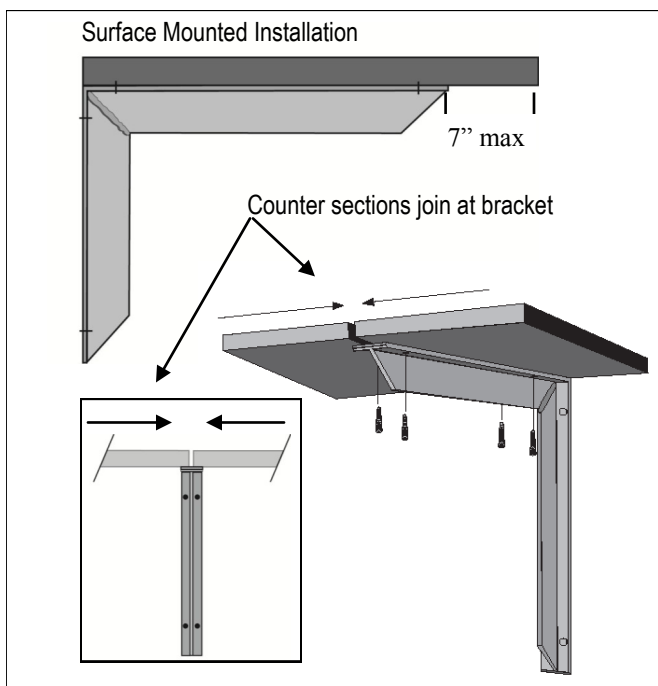
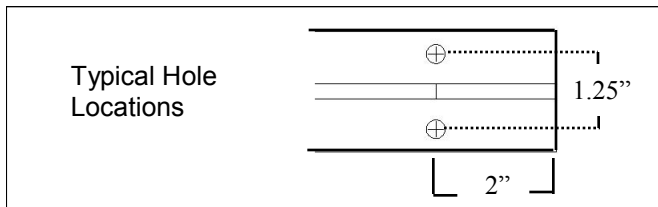
EH-Surface Mount Counter Support Bracket Information & Installation



Rakks Counter support brackets come in a variety of sizes, configurations and finishes to provide sturdy and unobtrusive support for counters, work surfaces, vanities and benches. Rakks counter supports are stocked in unfinished “mill” aluminum, off-white powder coated, black powder coat, clear anodized and primed for painting. Custom powder coat and anodized finishes are available.

Surface Mounted Installation

Rakks Counter Support Brackets can carry significant loads but they must be securely fastened to the wall. With continuous blocking, or double-stud construction, brackets can be spaced as much as 4 feet apart. Recommended hardware: 1/4" x 2" Phillips pan head sheet metal screws, heavy duty Toggle Bolts, or optional color matched Phillips head screws with finish washers. When mounting into wood studs "toeing" into the stud will ensure that all screws are fully engaged. Otherwise, align the bracket so that one top and one bottom screw are fully engaged. We suggest spacing brackets at a maximum of 32" on center when installing into metal studs or in any application where just two screws are securing the bracket to the wall. Attach the counter to the bracket using appropriate length screws or construction adhesive. Two counter sections can join easily and securely at the bracket.



Installation Note: check with counter manufacturer to determine maximum unsupported spans and overhang.

| Model # | Counter Depth | Size | T-Extrusion | Weight Capacity |
|----------|--------------------|-----------------|----------------|-----------------|
| EH-1209 | to 13" | 12" x 9" | 2" x 2"x .25" | 650# |
| EH-1212 | to 18" | 12" x 12" | 2" x 2"x .25" | 450# |
| EH-1818 | to 25" | 18" x 18" | 2" x 2"x .25" | 450# |
| EH-1824 | to 30" | 18" x 24" | 2" x 3"x .188" | 450# |
| EH-1416B | Bench w/ 5" planks | 14.25" x 15.75" | 2"x3"x .188" | 450# |

Weight capacity is based on evenly distributed static loads

Counter Support Brackets with grommets are Made-to-Order and Non-Returnable.

Engineered and manufactured in the United States by:
Rangine Corporation, Needham Massachusetts 02494
Tel: 781-455-8700, 800-826-6006, www.rakks.com

EH-Inside Wall Mount Counter Support Bracket Information & Installation



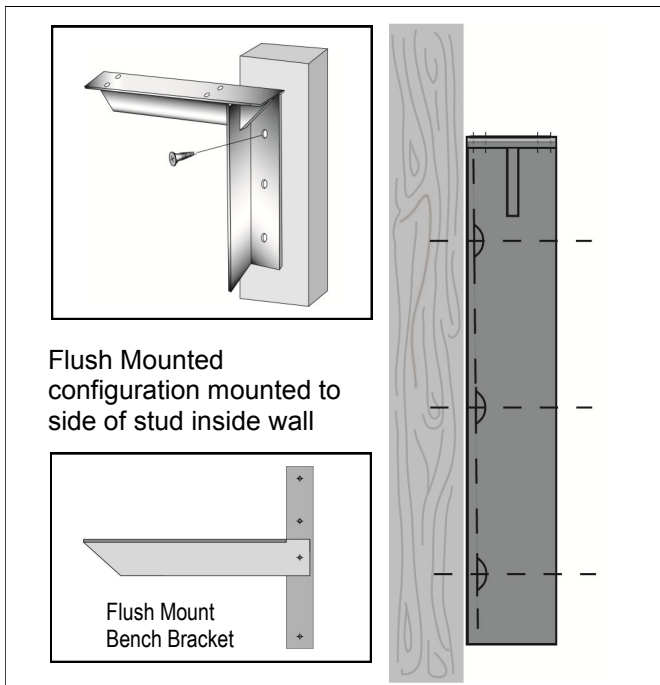
Flush Mounted Installation

Flush mounted counter supports are attached to the side of the stud prior to the application of wall board. Flush mounted brackets are **typically** mounted to the right side of the stud facing the wall. (see drawing below) They are also offered in a made-to-order Left sided Flush mount bracket and a Vertical Flush mount bracket. Flush mounts should be screwed into wood studs with #14 screws in 3 places. For installation into metal studs, additional wood blocking should be placed inside the stud for maximum strength. Drill with 3/16" drill bit through the stud and wood blocking and secure with 1/4-20 x 2" bolts and nuts.

Flush Mount - Preparation and Application of Drywall

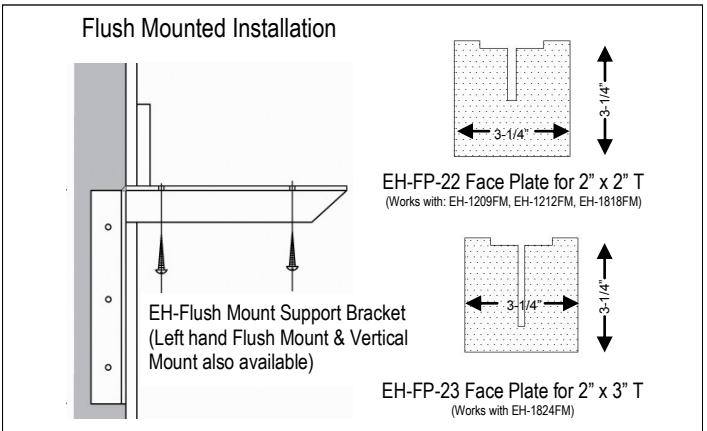
To provide for a fully recessed installation, the drywall must be installed and patched around the bracket supporting arm. Once the drywall has been installed, it should be plastered around the bracket, to provide a finished installation. Anodized aluminum face plates, with adhesive backing, eliminate time consuming patching and finishing.

Installation Note: check with counter manufacturer to determine maximum unsupported spans and overhang.



Flush Mounted configuration mounted to side of stud inside wall

Flush Mount Bench Bracket



| Model # | Counter Depth | Size | T-Extrusion | Weight Capacity |
|-------------|---------------|-----------------|---------------|-----------------|
| EH1209FM | to 13" | 12" x 11" | 2" x 2"x .25" | 430# |
| EH-1212FM | to 18" | 12" x 14" | 2" x 2"x .25" | 430# |
| EH-1818FM | to 25" | 18" x 20" | 2" x 2"x .25" | 300# |
| EH-1824FM | to 30" | 18" x 26" | 2" 3"x .188" | 300# |
| EH-1416B-FM | to 18" | 14.25" x 17.75" | 2"x3"x .188" | 300# |

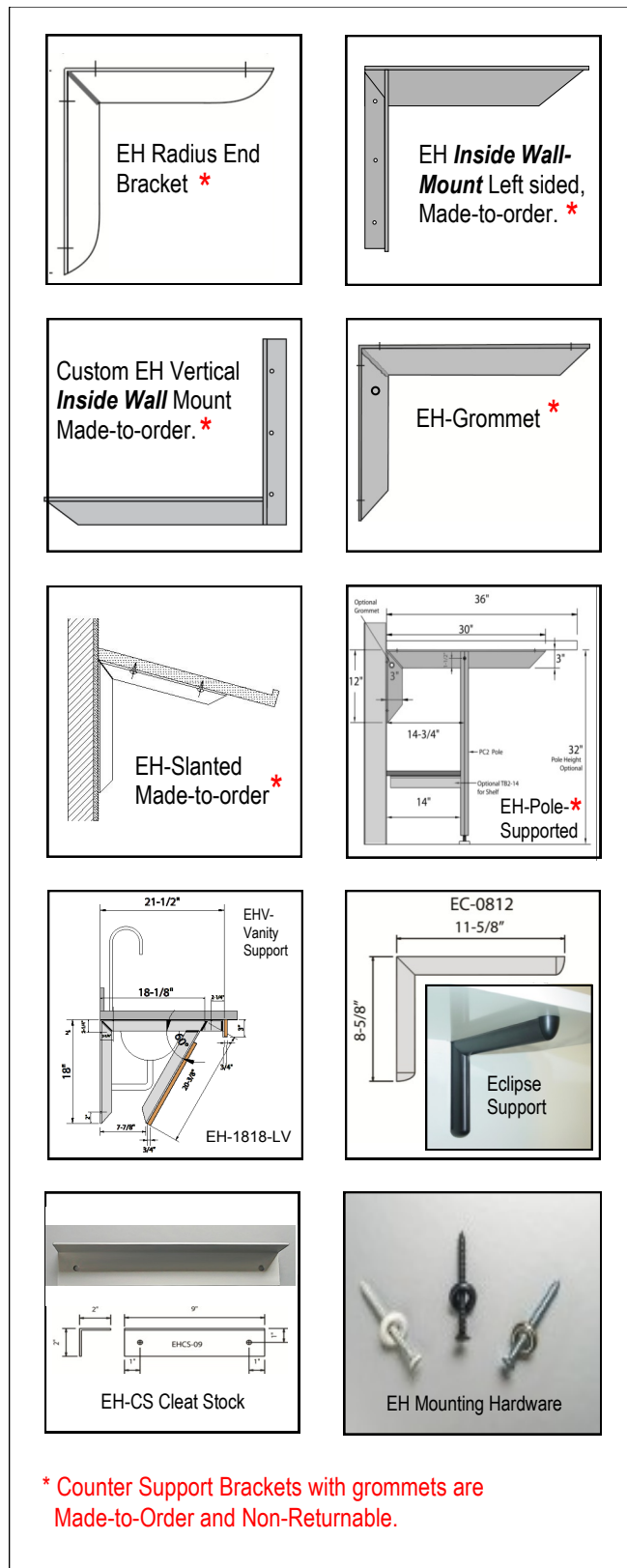
Weight capacity is based on evenly distributed static loads

Counter Support Brackets with grommets are Made-to-Order and Non-Returnable.

Engineered and manufactured in the United States by:
Rangine Corporation, Needham Massachusetts 02494
Tel: 781-455-8700, 800-826-6006, www.rakks.com

Installation Note: To minimize shimming, be sure to install the brackets so that the supporting arm is parallel to the floor. Install so that the vertical support is flush with, or slightly behind the stud to allow for application of sheet rock. Left hand and Vertical Flush Mount brackets are available.

EH-Counter Support Options Information & Installation



Radius End Surface & Inside Wall Mounted bracket *

Used in applications requiring additional safety and refinement beneath a counter or work surface, Any EH-Series Bracket can be ordered with a Radius End option.

Left Sided Inside Wall Mount *

Allows brackets to be mounted to the left side of the stud when field conditions interfere with the typical (right side) installation.

Vertical Inside Wall Mount *

Allows brackets to be supported from above the counter when field conditions interfere with the typical (below counter) installation.

EH-Grommet Option *

Used for under-counter wire management. Rubber grommet with 5/8" Diameter opening can accommodate a RJ-45 connector or wire ties.

EH-Slanted (Horizontal leg) Option *

Used in applications requiring an angled surface, any EH bracket can be ordered in the slant mount configuration. Counter depth and angle as specified.

EH-Pole Supported Counter Bracket for 36" counter *

Used to install counters and work surfaces up to 36" deep. The additional support leg provides the increased strength and stiffness needed for deep cantilevered surfaces. (See specification sheet for additional information)

EHV Vanity Supports

Rakks ADA compliant vanity brackets simplify and reduce the cost of installing sinks and provide a stable and sturdy mounting surface for custom-built enclosures. (See specification sheet for additional information)

Eclipse Support

This attractive low-profile bracket is easy to install with no visible hardware. Supports counters or shelves up to 18" deep. (See specification sheet for additional information.)

EH-CS Aluminum Angle Cleat Stock

Rakks' 2" x 2" x 1/8" aluminum angle cleat stock is available in lengths and finishes to compliment our EH-Counter Support Brackets. One leg is pre-drilled with 5/16" diameter holes to mount to the wall.

EH-Mounting Hardware

#14 x 2 1/2" Phillips flat-head screw with color-matched finish washer. Ideal for Surface mounted Counter support brackets as well as cleat stock. Finishes available: Nickel, Black, and Off white.

Engineered and manufactured in the United States by:
Rangine Corporation, Needham Massachusetts 02494
Tel: 781-455-8700, 800-826-6006, www.rakks.com